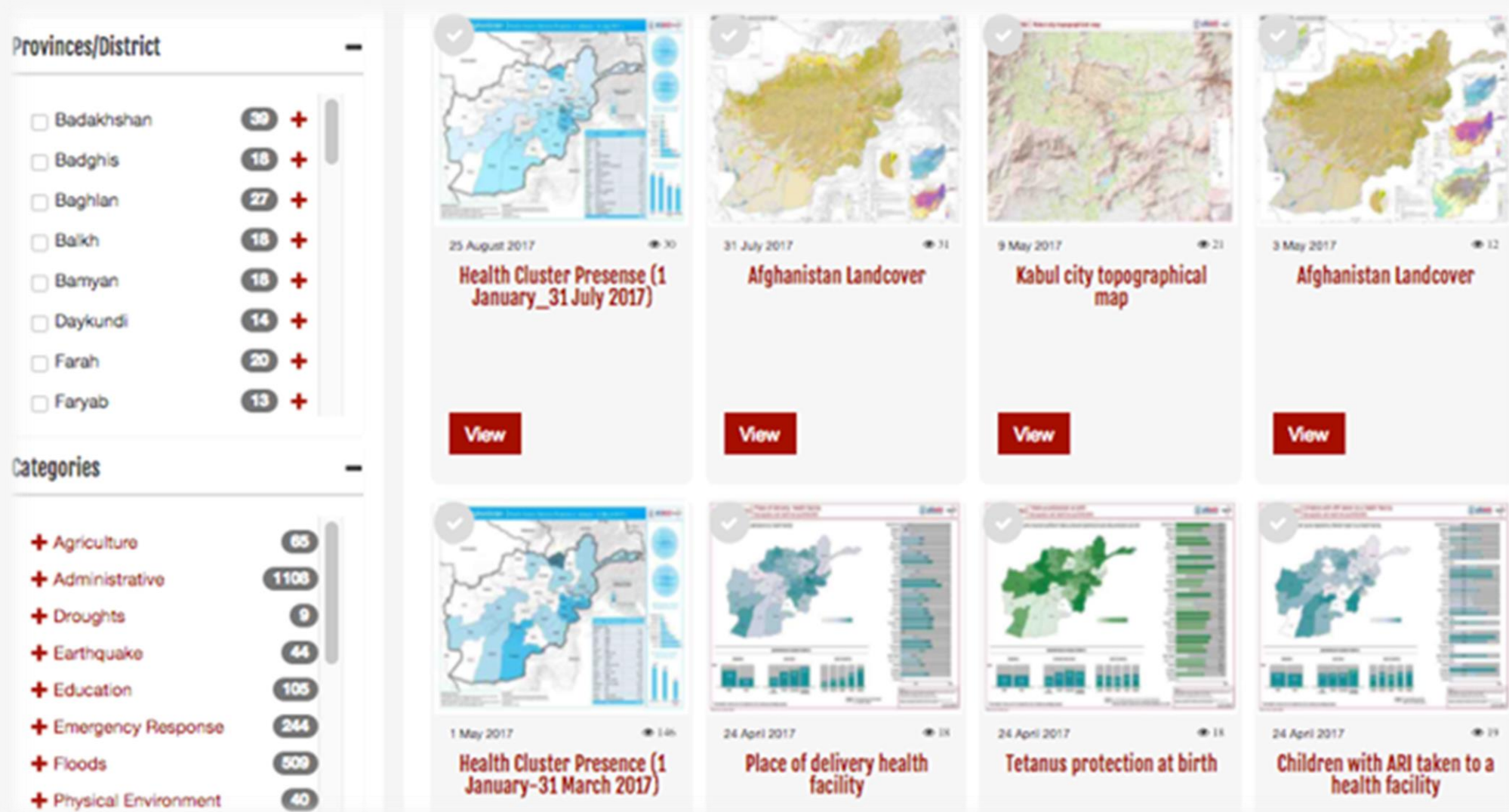


**Information Management Approach in
Capacity Strengthening, Donor awareness,
Support to Project Implementation,
Vulnerability & Hazard Mapping, M&E**

Information Management

Information management can support government institutions, humanitarian and development organizations, enabling them to make informed decisions that ultimately provide high-quality targeted assistance to the world's most vulnerable populations.



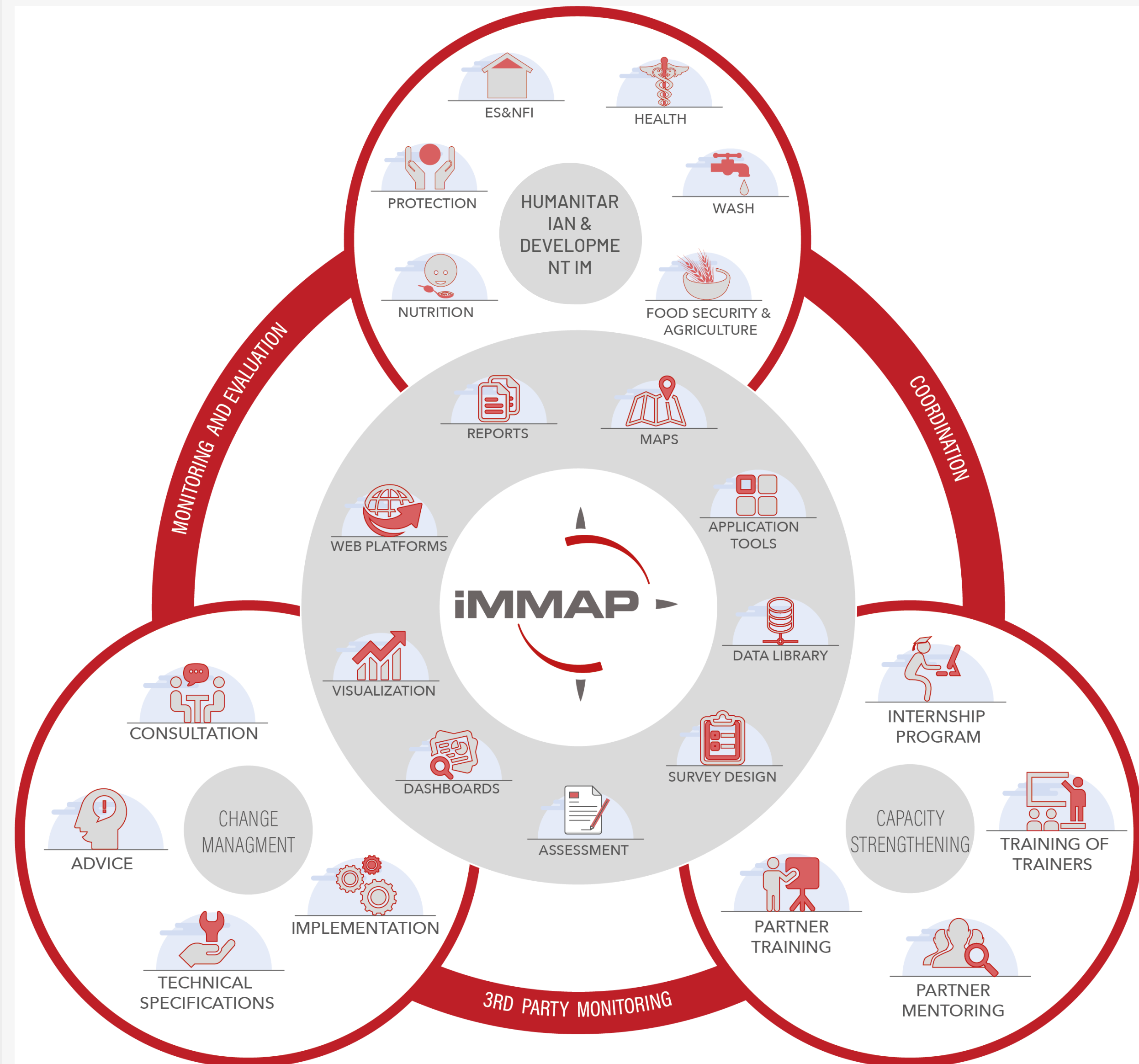


IM Work & Approach³

- **Goal:** Harness the power of information to facilitate evidence-based decisions to improve people's lives.
- **Promote coordination** between actors through better information sharing.
- **Assist governments and development actors** to determine reconstruction priorities in post-disaster zones.
- **Support humanitarian and development organizations** to deliver life-saving aid to beneficiaries more efficiently.
- **Advise governments on how to mitigate the impact of natural disasters.**

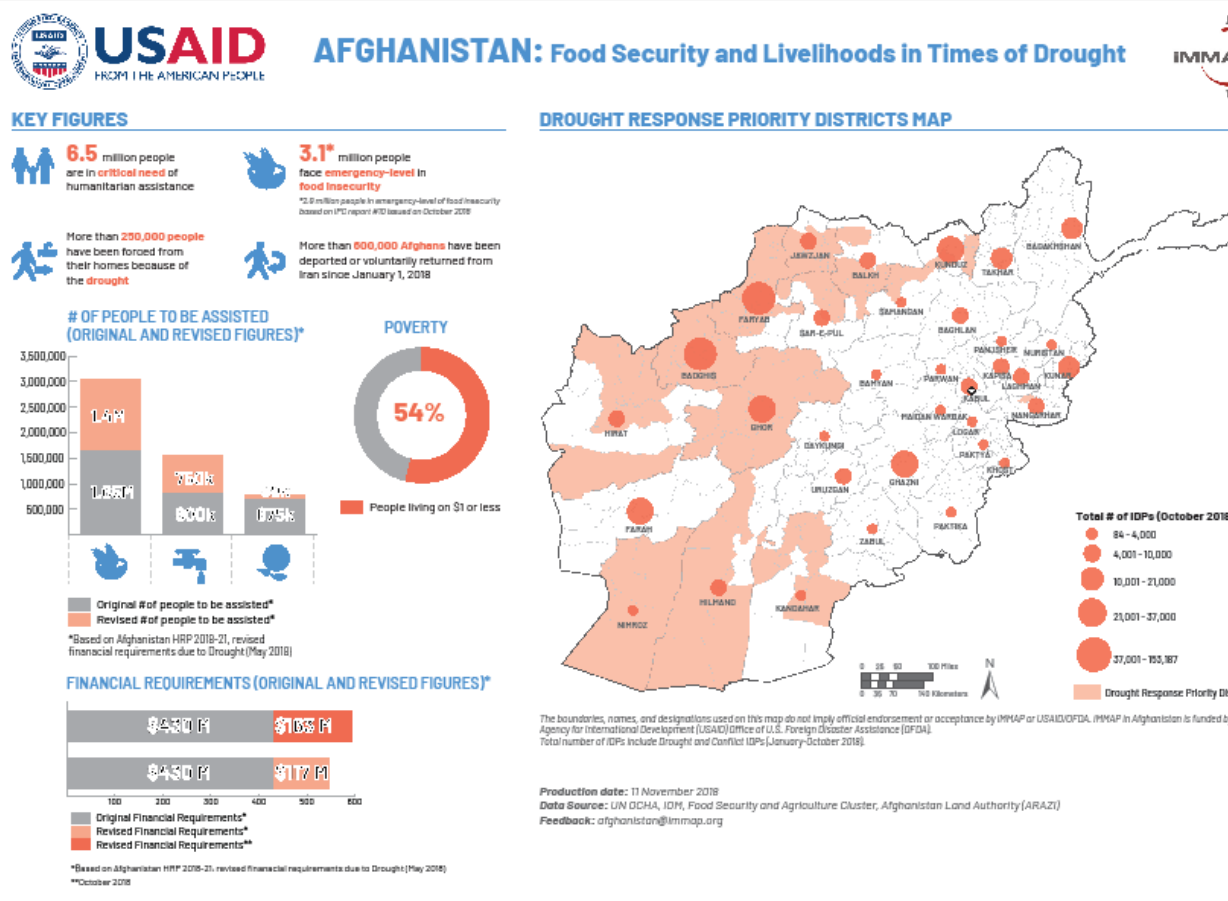
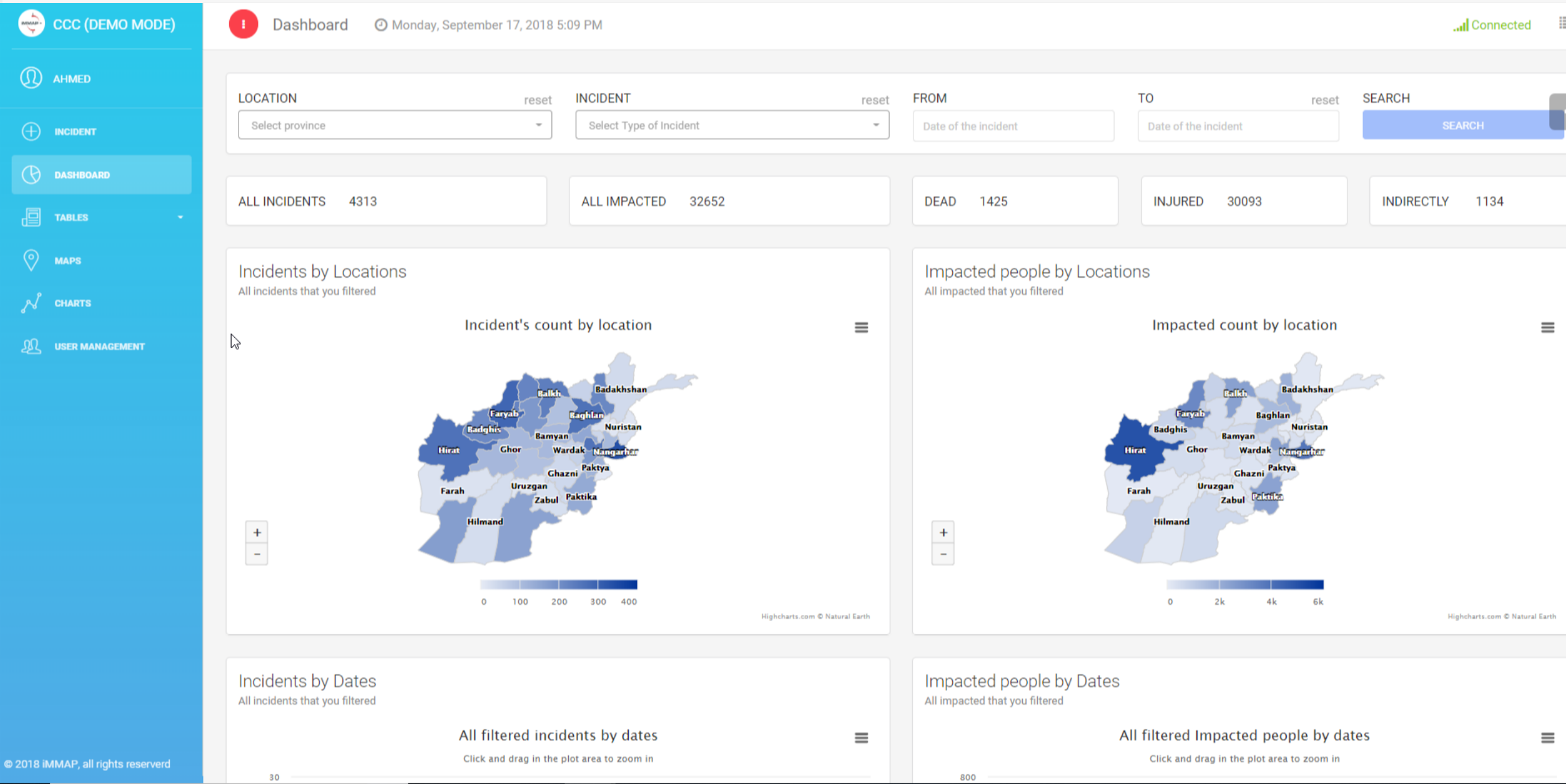
IM Products and Services

- Mobile Data Collection Tools
- Data Analysis
- Web Based IM Systems Development
- Infographics Assessment & Survey Management



IM Products and Services

- Maps
- Dashboards
- Infographics
- Institutional Capacity Building
- Information, Knowledge and Change Management





Case study: IM to present Project Achievement and Results for donor reporting

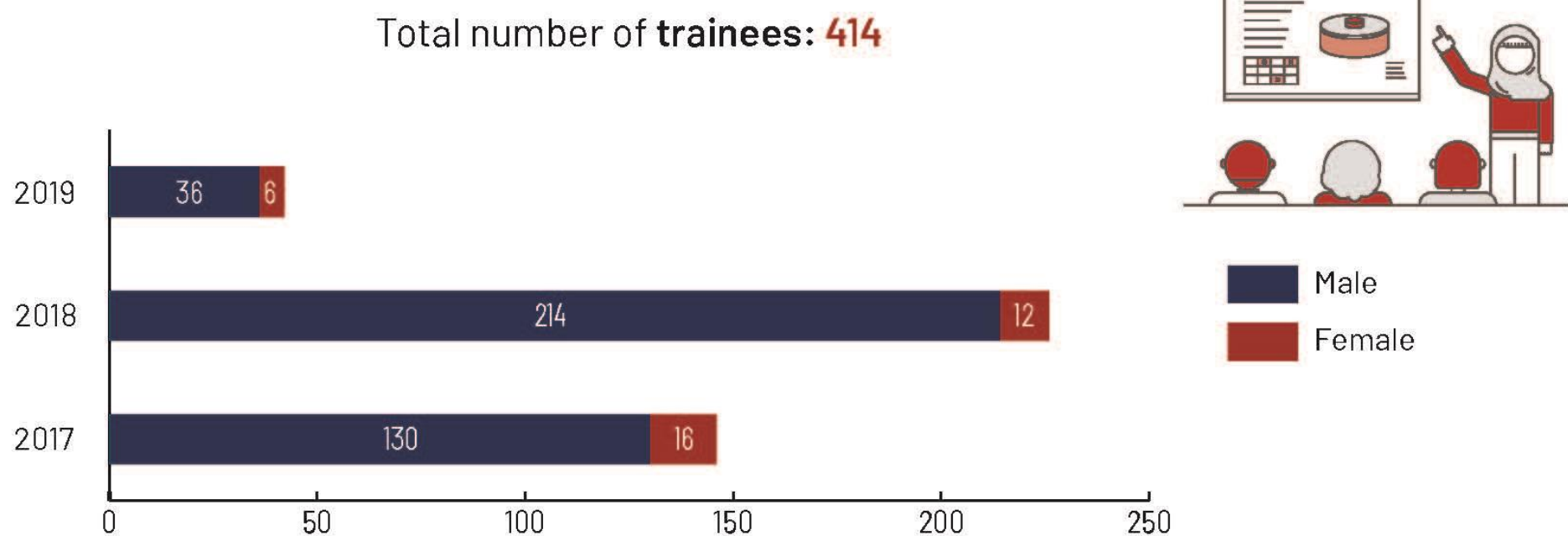
QUESTION: Is there a way to obtain Progress report in an easy to communicate and to use for Decision Maker and Program officer

iMMAP Afghanistan Monitoring Dashboard (Products and Training), 2017 - 2019

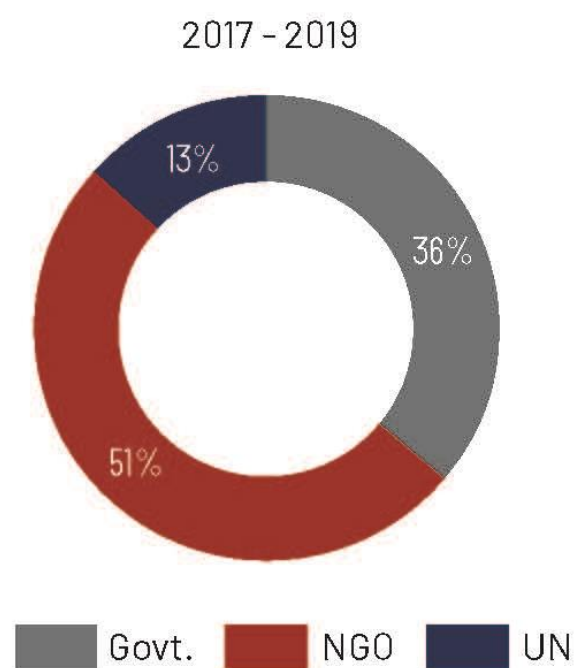


Capacity Strengthening

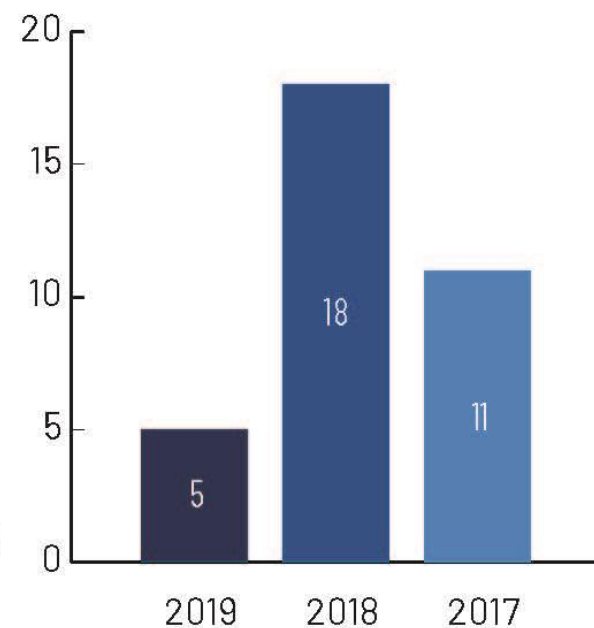
Through specialized training, workshops, and knowledge sharing activities, iMMAP empowers humanitarian stakeholders and national capacities to reach a professional understanding of the principles and best practices of information management in humanitarian and disaster risk reduction context.



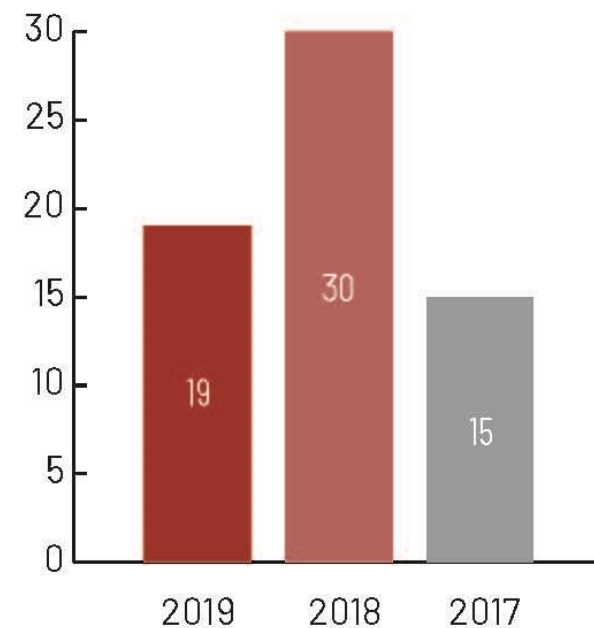
Total number of **organizations trained: 105**



Total number of **trainings: 34**

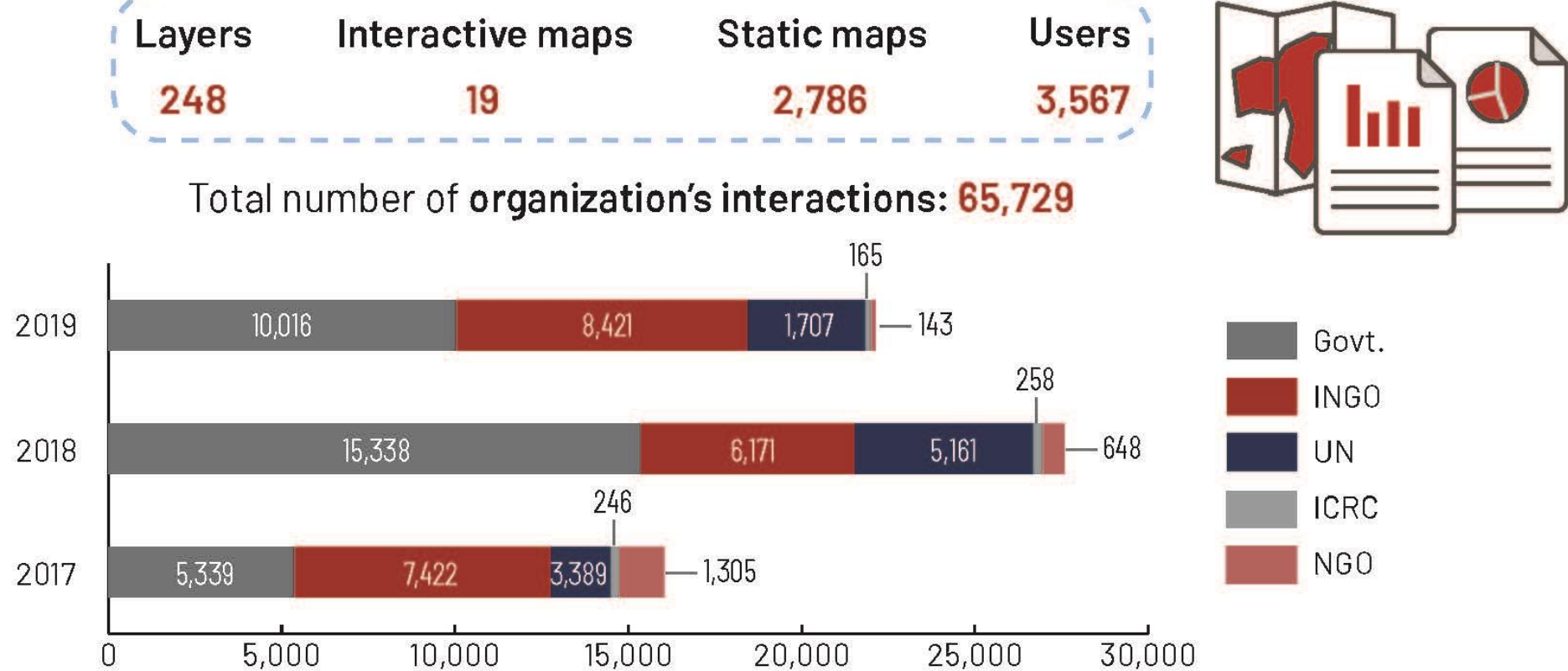


Total **duration (days) of trainings: 64**



Afghanistan Spatial Data Center (ASDC)

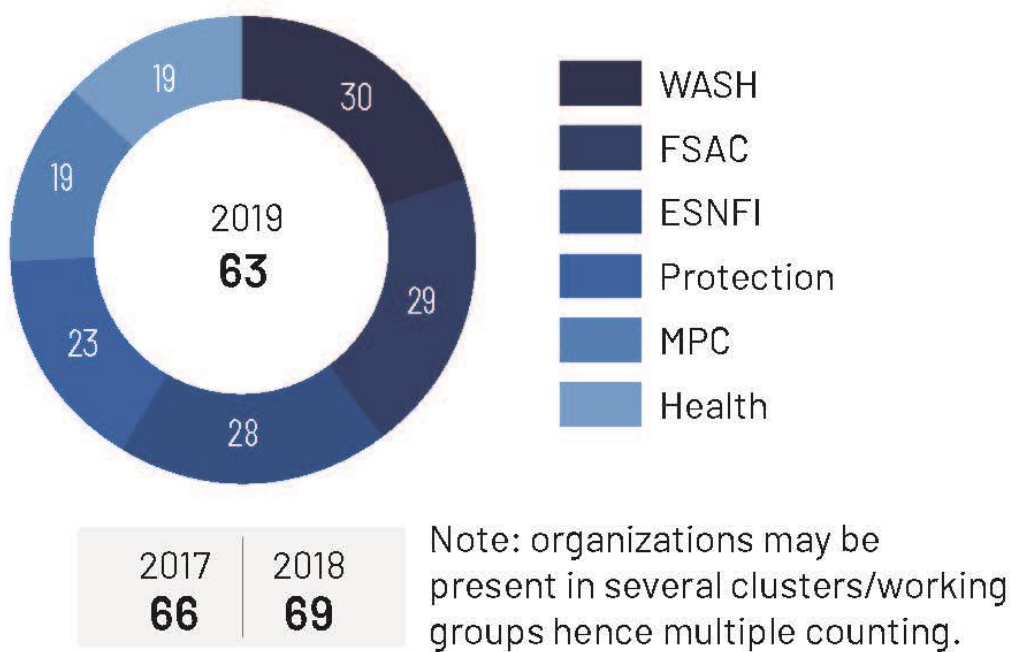
The ASDC is a geospatial platform that provides critical information to line ministries and aid organizations for DRR, planning, and emergency response. Users can access updated interactive dashboards and maps.



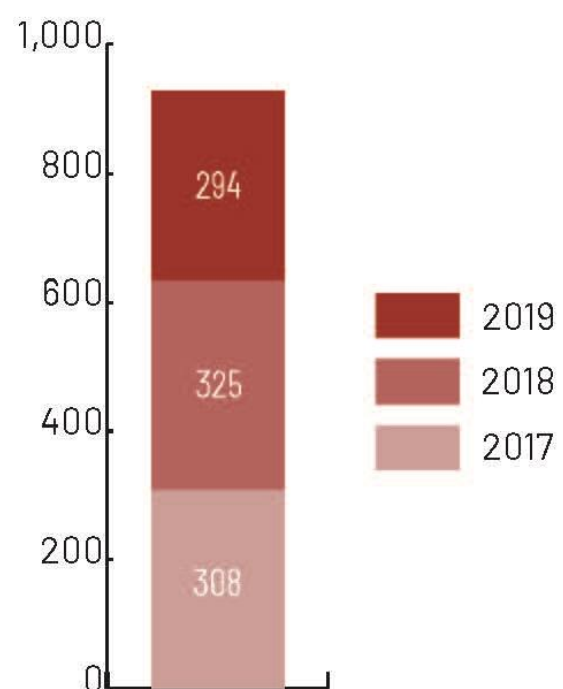
ReportHub

ReportHub is an online reporting platform that addresses the gap in reporting operational data across organizations by streamlining the information flow between clusters, partners, and the HCT in support of the HRP. **2,531 data accesses** (data downloads and dashboard consultations) **were recorded in 2019**.

Active organizations by cluster/working group



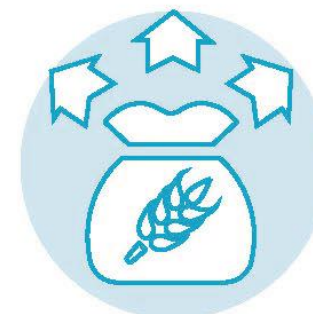
Total number of **projects: 927**



In June 2019, WFP reached a total of 788,094 people with food assistance in 31 out of 34 provinces. The full-scale drought response ended in June, reaching 491,500 people in its last month. Further, food assistance was provided to families displaced by conflict, affected by floods or who returned from Iran and Pakistan as well as malnourished children and mothers. Some 88,408 primary school students in Nangarhar province received daily high-energy biscuits and take-home rations for their families. As part of WFP's programming at the humanitarian-development-peace nexus, WFP conducted asset creation activities that supported 38,934 people with food assistance.



788,000
BENEFICIARIES REACHED
WITH FOOD ASSISTANCE

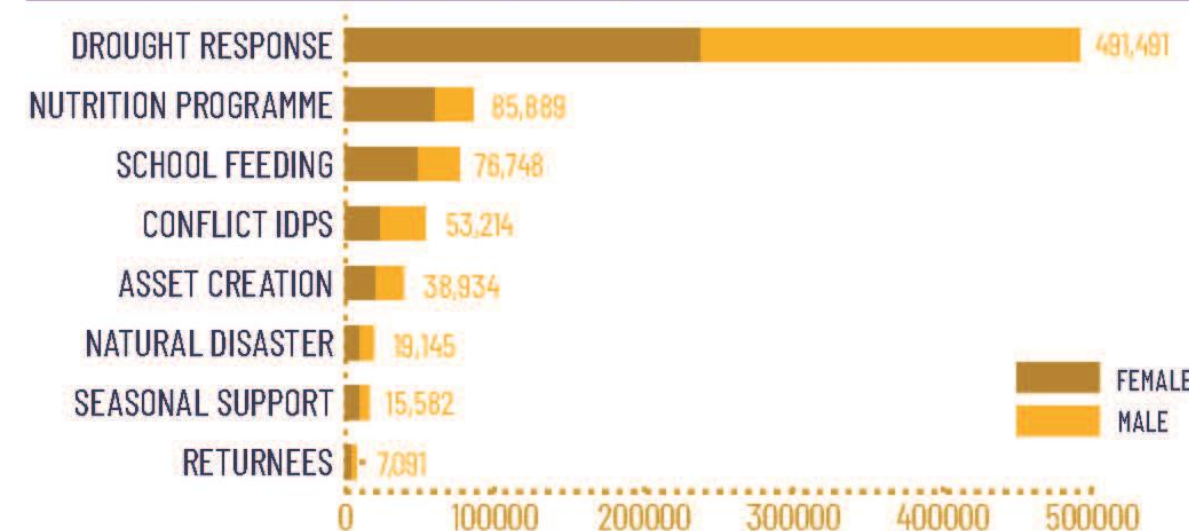


6,647 MT*
OF FOOD DISTRIBUTED
ACROSS THE COUNTRY

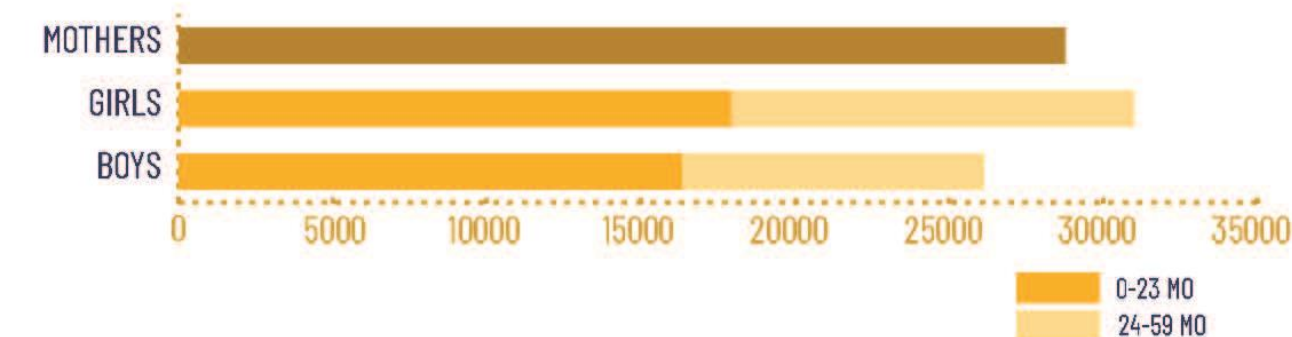


31 OUT OF 34
PROVINCES COVERED

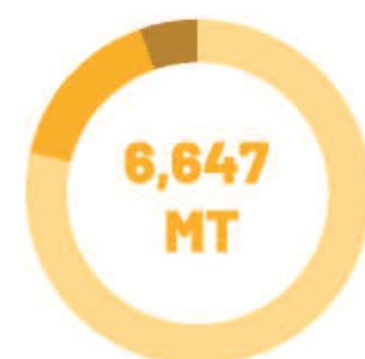
PEOPLE REACHED BY PROGRAMME



MALNOURISHED CHILDREN AND MOTHERS REACHED**

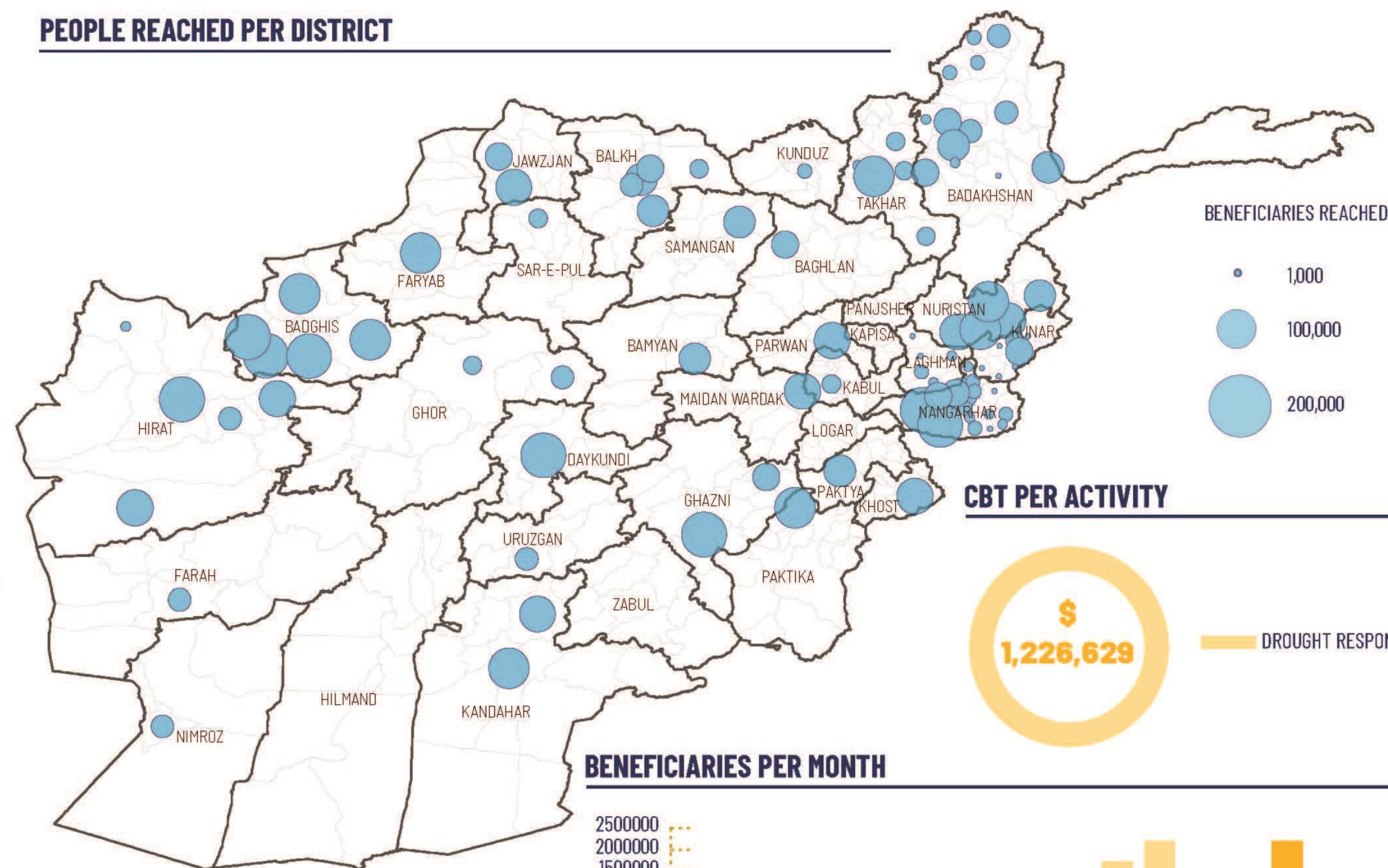


FOOD DISTRIBUTED (BREAKDOWN OF COMMODITIES)

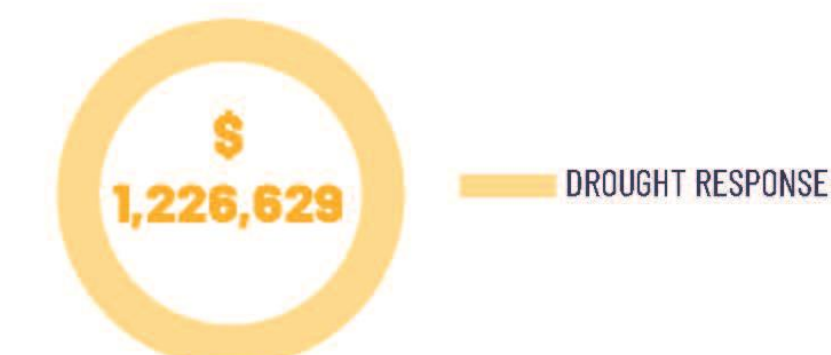


WHEAT FLOUR
VEGETABLE OIL, PULSES, SALT
NUTRITIOUS FOODS +
HIGH-ENERGY BISCUITS +
WHEAT SOYA BLEND

PEOPLE REACHED PER DISTRICT



CBT PER ACTIVITY



BENEFICIARIES PER MONTH



Taken home message

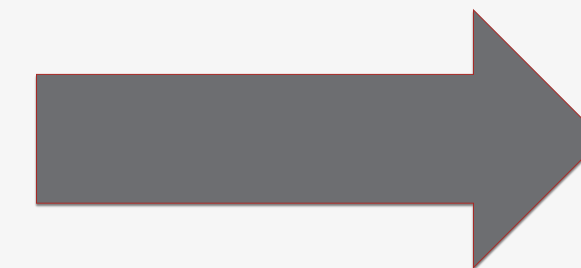
Donor

Project progress indicator

- Common request from donor
- Standardized but sometimes not representatives

Organizations

- Usually collect more information than project request
- Wealth of data/knowledge untapped



IM approach

- Enabling data into information
- Increased visibility for donor/partner



Case study: Vulnerability & Hazard Mapping – GIS & Remote Sensing



What Do We Use Them For ? ¹¹

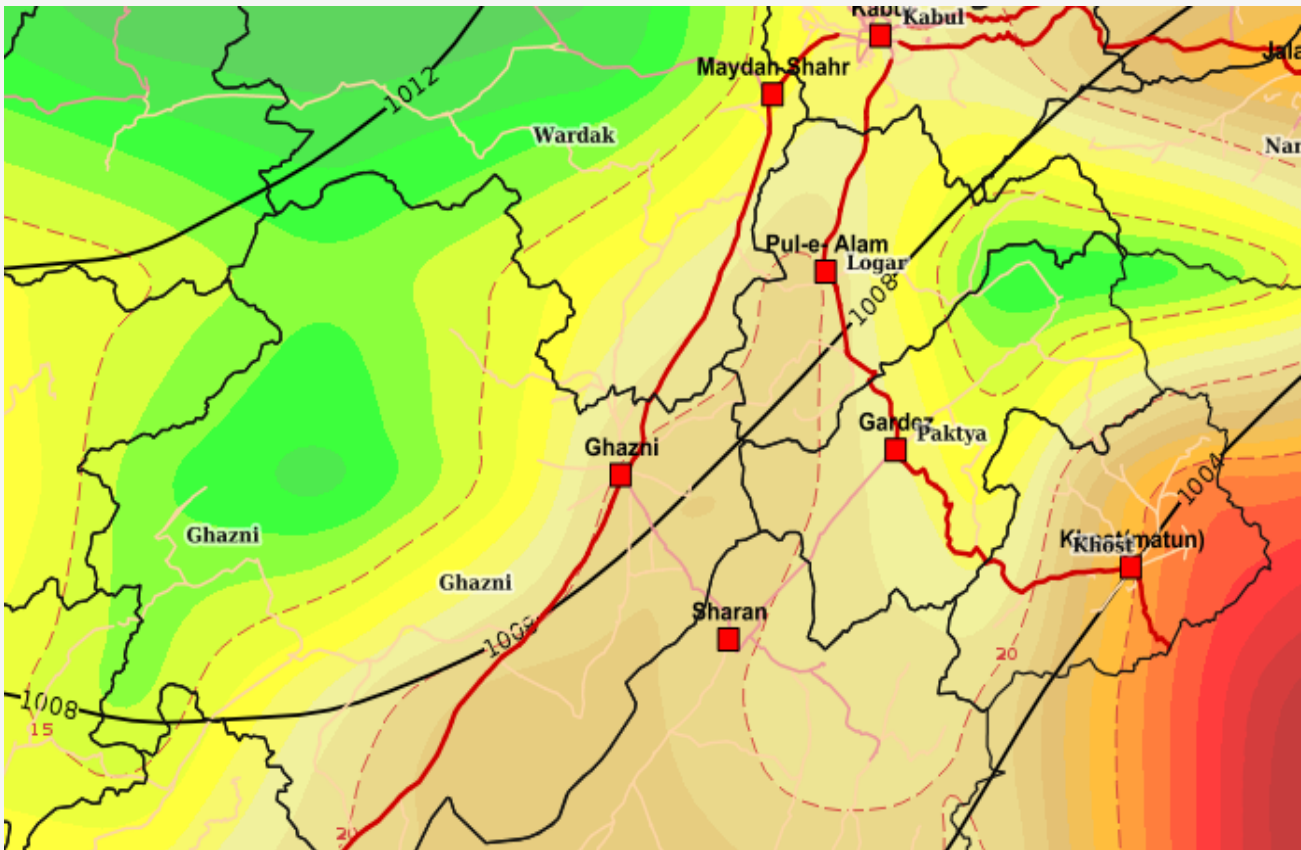
- Climate Change
- Drought
- Landslides
- Floods
- Earthquakes
- Community Base Vulnerability
- Avalanche

Climate Scenario: Bioclimatic variables

The data used originates mostly from the CHELSA project, which modelled climate for the period 1979-2013 at a resolution of 1km. CHELSA is using the ERA interim global circulation model from ECMWF

Table 1 Bioclimatic Variables (19)

Annual Mean Temperature	Annual Precipitation
Mean Diurnal Range	Precipitation of Wettest Month / Driest Month
Isothermality	Precipitation Seasonality
Temperature Seasonality	Precipitation of Wettest Quarter / Driest Quarter
Max Temperature of Warmest Month	Precipitation of Warmest Quarter / Coldest Quarter
Min Temperature of Coldest Month	Mean Temperature of Warmest Quarter / Coldest Quarter
Temperature Annual Range	Mean Temperature of Wettest Quarter / Driest Quarter



For each period (2050 and 2070) they provide 3 potential climate change scenarios, using so called RCPs (Representative Concentration Pathways). These predict global average temperature change by 2100 in the range of:

- RCP2.6: 0.3 to 1.7 C°
- RCP4.5: 1.1 to 2.6 C°
- RCP8.5: 2.6 to 4.8 C°

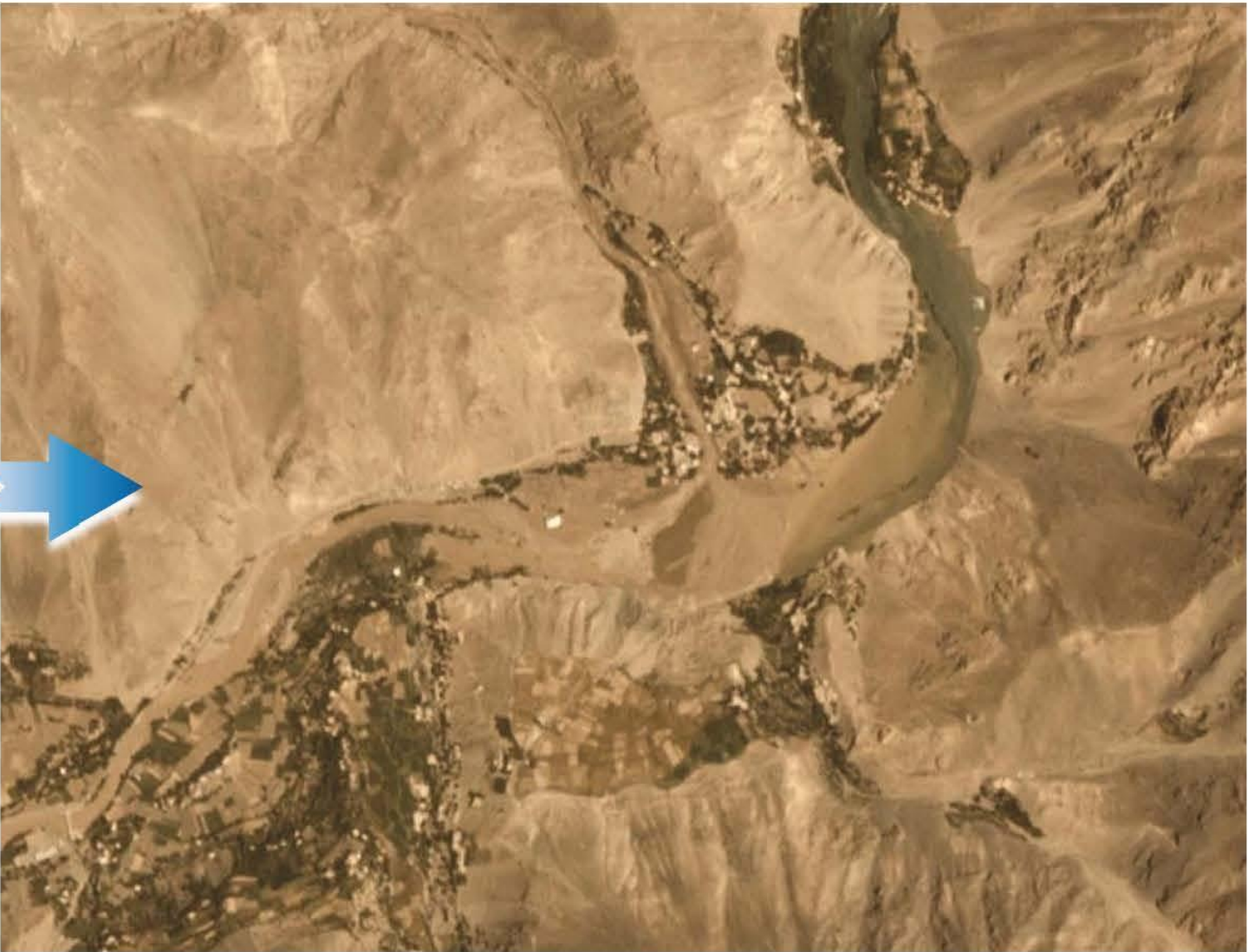
Landslides

AFGHANISTAN Landslide/Flashflood in Peshghor Khenj District Panjsher Province 12/07/2018



10 July 2018 (Before)

12 July 2018 (After) (10:05 Kabul Time)



Peshghor
Landslide/Flashflood
12/07/2018

Estimated Village Population

3000

Estimated Village Houses

275

Houses potentially destroyed

80

Cultivated land Lost

20 ha.



Based on ASDC, we estimate that approximately 800 people live in the affected area and there are about 80 houses potentially destroyed, pending how much the settlement center was affected near the river.

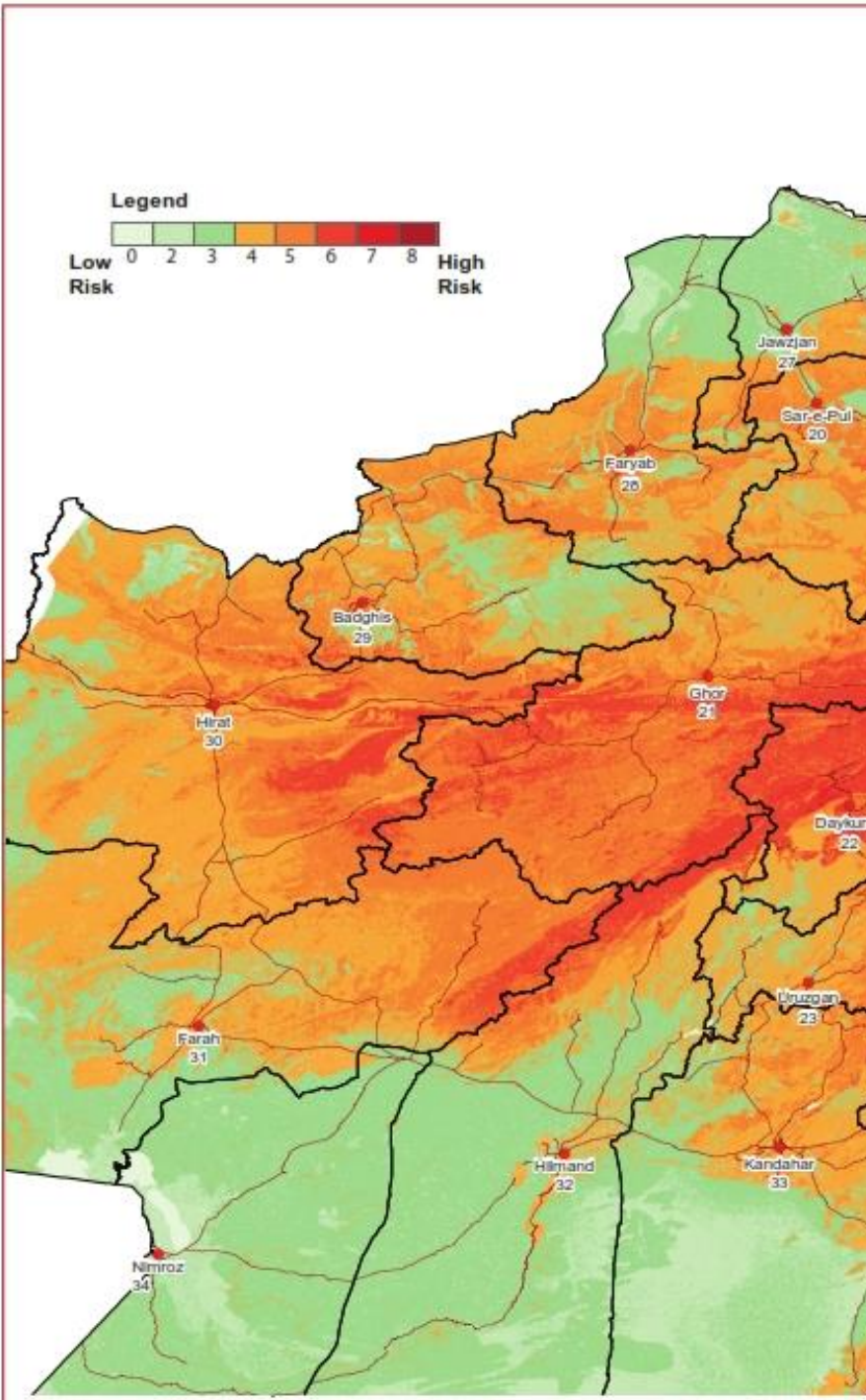
Approximately 20 hectares of cultivated land was lost of a total of 50 (50 includes some areas of neighboring settlements). We estimate that there are almost 3000 people living in the area (275 houses) - see Area map.

Disclaimer and Source: This map is compiled by iMMAP on landslide/flashflood which occurred on 12th July 2018. Datum/Projection:

WGS84/Geographic.
Date created: 24/07/2018.

iMMAP in Afghanistan is funded by The United States Agency for International Development (USAID)/ Office of U.S. Foreign Disaster Assistance (OFDA). The data, boundaries and names and the designations used on this map do not imply official endorsement or acceptance by iMMAP or USAID/OFDA. All information is the best available at the time this map was produced. For copies or information regarding specific data sources and methodology: Afghanistan@immap.org.

Afghanistan: Landslide Susceptibility



Series: DRR-Temp
Datum/projection:
WGS84/Geographic
Date Created:
10/23/2017

iMMAP in Afghanistan is funded by the U.S. Agency for International Development (USAID) Office of U.S. Foreign Disaster Assistance (OFDA). The boundaries, names and designations used on this map do not imply official endorsement or acceptance by iMMAP or USAID/OFDA. All information displayed is the best available at the time this map was produced.



Peshghor
Landslide/Flashflood
12/07/2018

Estimated Village Population

3000

Estimated Village Houses

275

Houses potentially destroyed

80

Cultivated land Lost

20 ha.



Based on ASDC, we estimate that approximately 800 people live in the affected area and there are about 80 houses potentially destroyed, pending how much the settlement center was affected near the river.

Approximately 20 hectares of cultivated land was lost of a total of 50 (50 includes some areas of neighboring settlements). We estimate that there are almost 3000 people living in the area (275 houses) - see Area map.

Disclaimer and Source: This map is compiled by iMMAP on landslide/flashflood which occurred on 12th July 2018. Datum/Projection:

WGS84/Geographic.
Date created: 24/07/2018.

iMMAP in Afghanistan is funded by The United States Agency for International Development (USAID)/ Office of U.S. Foreign Disaster Assistance (OFDA). The data, boundaries and names and the designations used on this map do not imply official endorsement or acceptance by iMMAP or USAID/OFDA. All information is the best available at the time this map was produced. For copies or information regarding specific data sources and methodology: Afghanistan@immap.org.

Floods

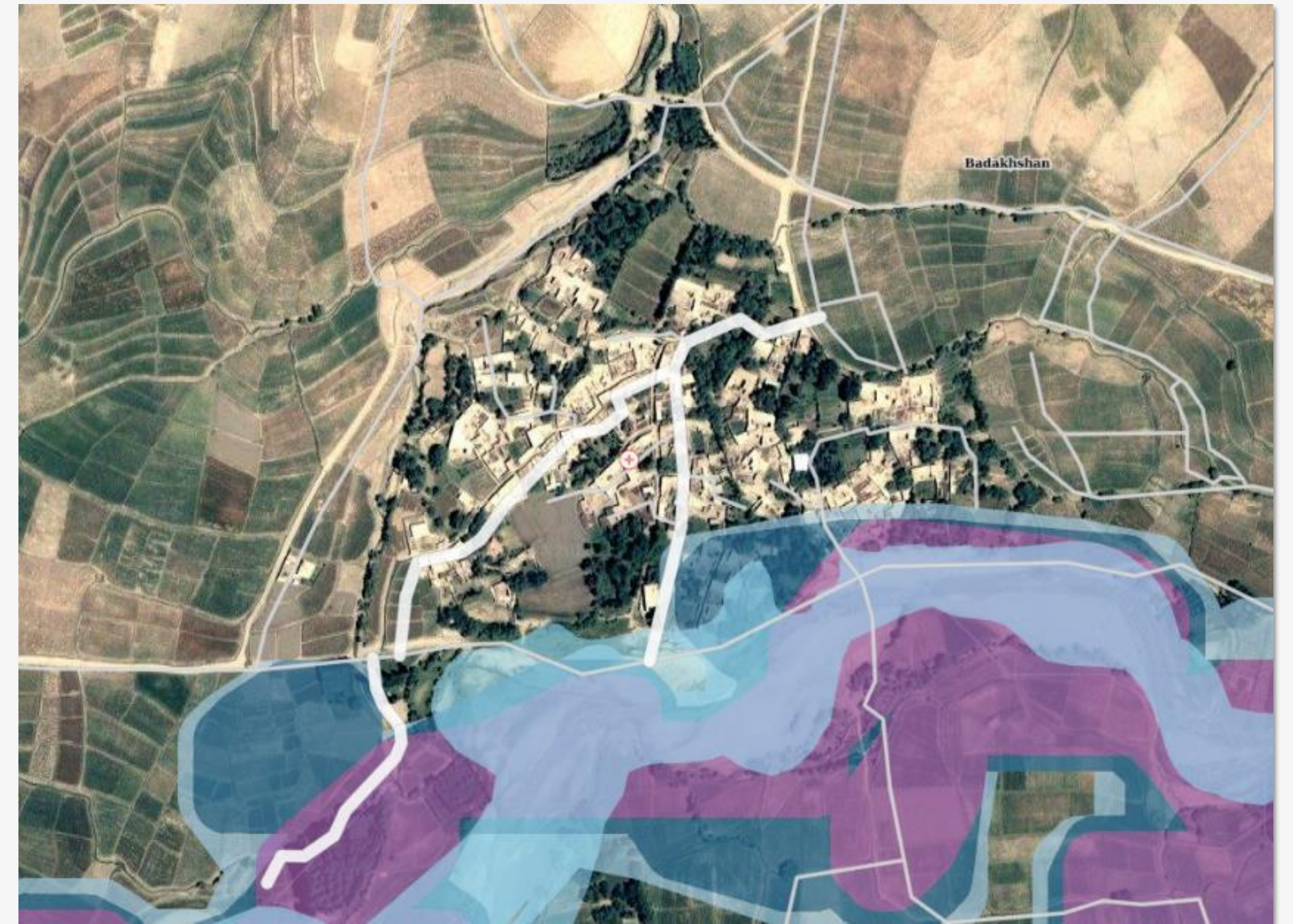
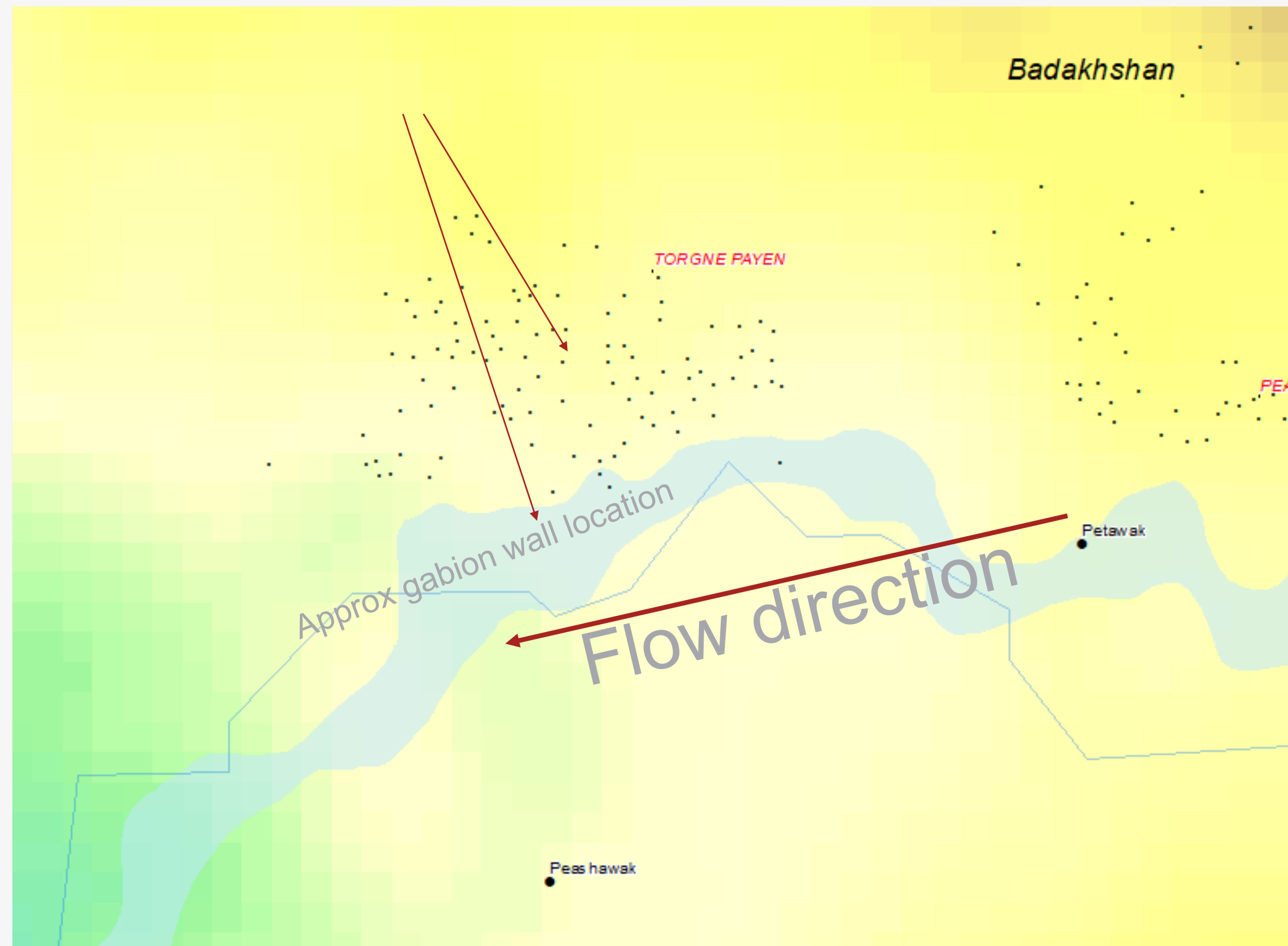
AFGHANISTAN

AFGHANISTAN

Jawzjan Province, Khwaja Du Koh District – est. agricultural land affected by heavy rain and flood 23-24 April 2014 – satellite imagery collected 7 May 2014



Floods



Community Base Vulnerability

ARC

Department for International Development

Community Mitigation Structures Constructed

USAID

FROM THE AMERICAN PEOPLE

IMMAP

Select Province

Ghor

Select District


Firoz Koh

Select Community


Akhta Khana ...

Constructed Structures :

Constructed 90.1m protection wall



← BEFORE



AFTER →

Click to Clear Filters

Microsoft Power BI

3 of 3

Location Diagram

Taken home message

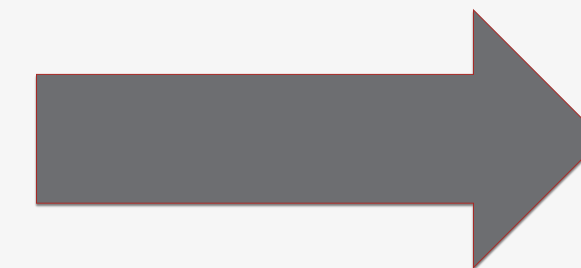
Donor

Evidence-based context analysis

- Integrated context analysis before RFP
- Baseline information
- M&E / TPM

Organizations

- Foster evidence base approach
- Prioritize allocation/activities



IM approach

- Remote management information systems for projects
- Objective metrics for prioritization
- Access analysis
- **Access to wealth of knowledge/data (majority of them open access) that are time consuming to find/prepare**

Static Maps

Browse the static maps, adjust the filter to easily find the static maps

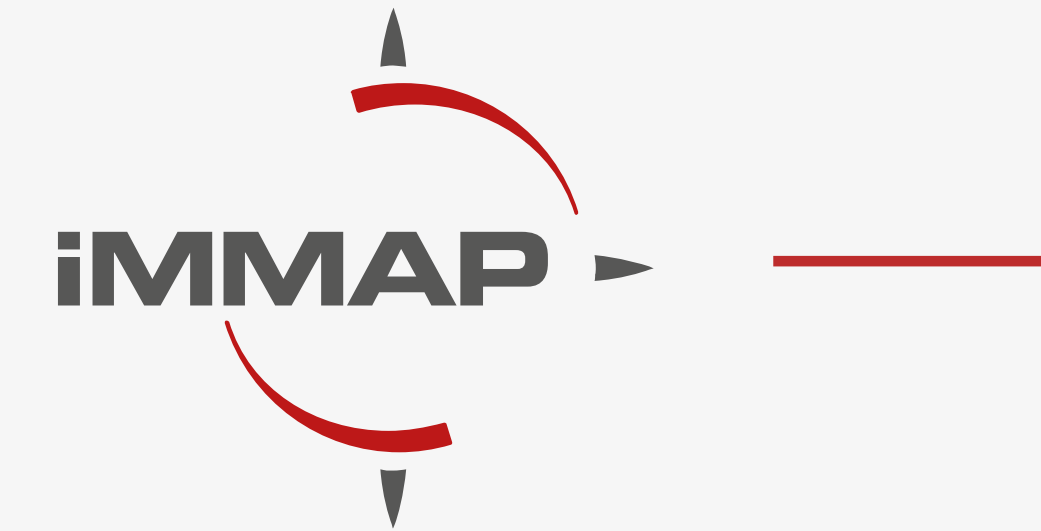
Browse Static maps

245
Layers

17
Interactive Maps

2611
Static Maps

2447
Users



Case: Study – Performance reporting

AFGHANISTAN IOM RAF (RAPID ASSESSMENT FORM) REPORTS PERFORMANCE FOR YEAR 2012



USAID
FROM THE AMERICAN PEOPLE



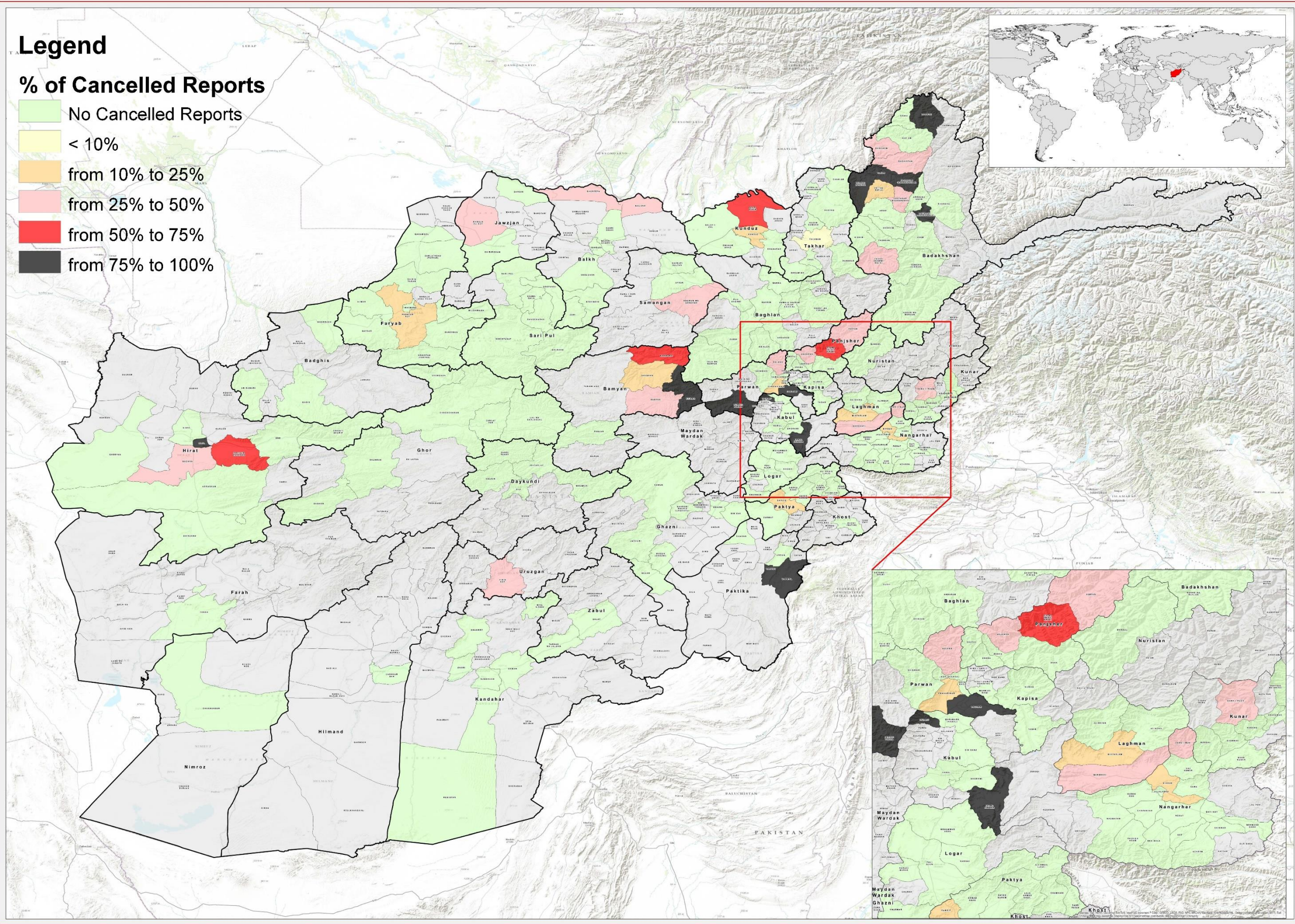
Disclaimer and Source: This map is compiled by IMMAP. - Datum/Projection: WGS84/Geographic. Date created: 14/01/2015. IMMAP in Afghanistan is funded by The United States Agency for International Development (USAID)/ Office of U.S. Foreign Disaster Assistance (OFDA). The data, boundaries and names and the designations used on this map do not imply official endorsement or acceptance by IMMAP or USAID/OFDA. All information is the best available at the time this map was produced. For copies or information regarding specific data sources and methodology: Afghanistan@immap.org Data source: IOM

This infographic is a representation of the Rapid Assessment Form (RAF) reports approved, closed and cancelled per districts in the year 2012.
The map highlights the districts where high percentage of reports submitted have been cancelled.
The charts provide information on the total number of reports submitted and the percentage of approved, closed and cancelled by districts and the total number of individuals and families affected.

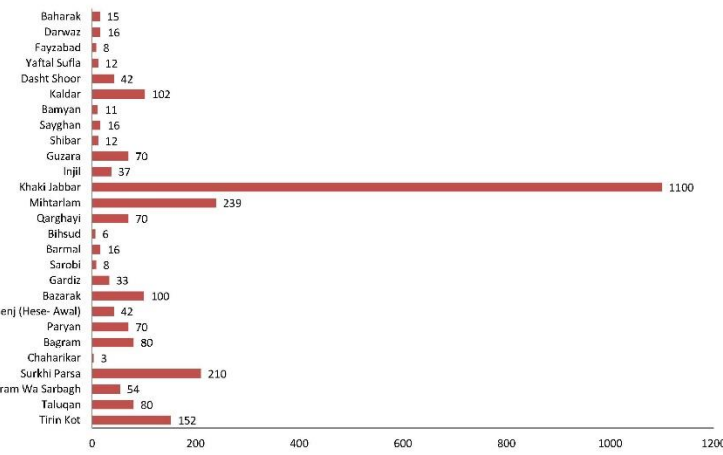
Legend

% of Cancelled Reports

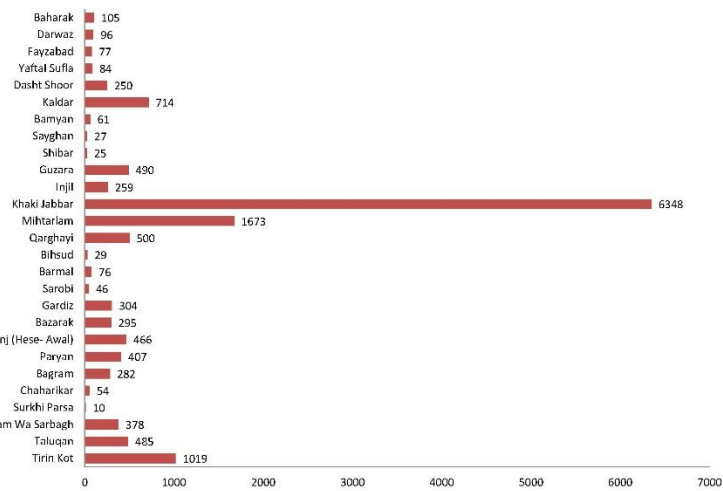
- No Cancelled Reports
- < 10%
- from 10% to 25%
- from 25% to 50%
- from 50% to 75%
- from 75% to 100%



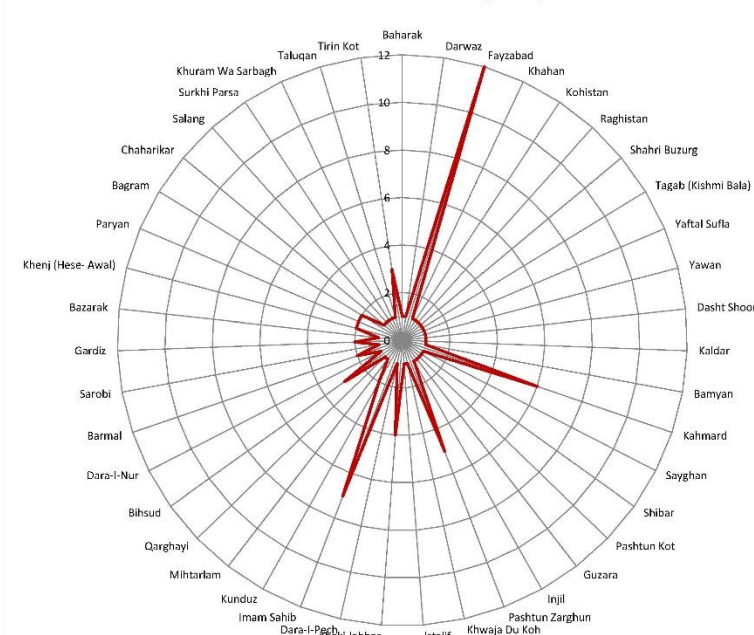
Year 2012: Number of Affected Families per Cancelled Reports



Year 2012: Number of Affected Individuals per Cancelled Reports

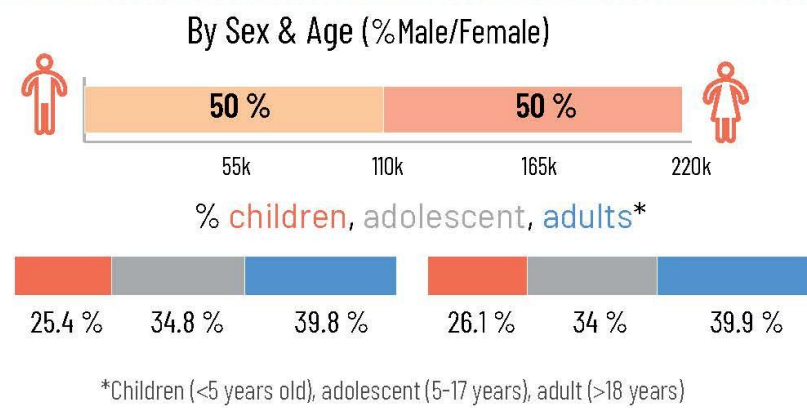
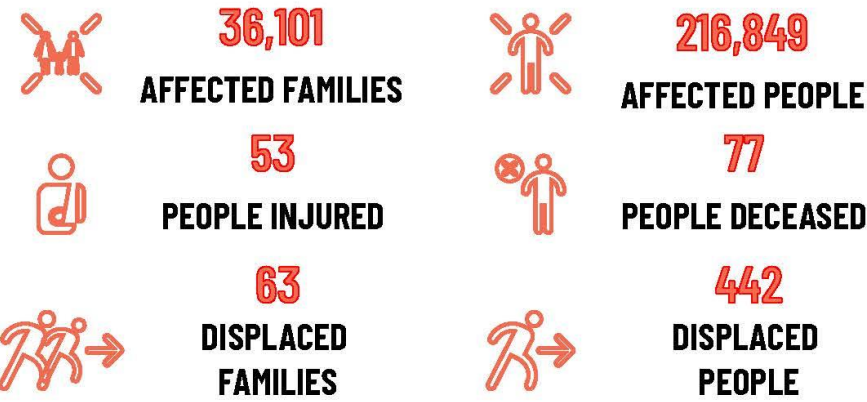


Year 2012: Number of Cancelled Reports per District

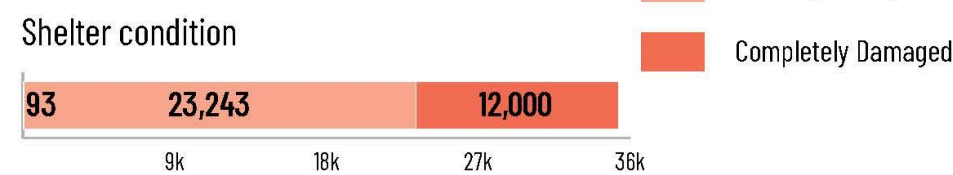


Province	District	Number of Approved Report	Number of Cancelled Report	Number of Closed Report	Total Number of Report
Badakhshan	Alay	1	0	0	1
	Yulghun	1	0	0	1
	Shinkor	1	0	0	1
	Shinkor	1	0	0	1
Balkh	Alay	1	0	0	1
	Yulghun	1	0	0	1
	Shinkor	1	0	0	1
	Shinkor	1	0	0	1
Bamyan	Alay	1	0	0	1
	Yulghun	1	0	0	1
	Shinkor	1	0	0	1
	Shinkor	1	0	0	1
Bardak	Alay	1	0	0	1
	Yulghun	1	0	0	1
	Shinkor	1	0	0	1
	Shinkor	1	0	0	1
Bardak	Alay	1	0	0	1
	Yulghun	1	0	0	1
	Shinkor	1	0	0	1
	Shinkor	1	0	0	1
Bardak	Alay	1	0	0	1
	Yulghun	1	0	0	1
	Shinkor	1	0	0	1
	Shinkor	1	0	0	1
Bardak	Alay	1	0	0	1
	Yulghun	1	0	0	1
	Shinkor	1	0	0	1
	Shinkor	1	0	0	1
Bardak	Alay	1	0	0	1
	Yulghun	1	0	0	1
	Shinkor	1	0	0	1
	Shinkor	1	0	0	1
Bardak	Alay	1	0	0	1
	Yulghun	1	0	0	1
	Shinkor	1	0	0	1
	Shinkor	1	0	0	1
Bardak	Alay	1	0	0	1
	Yulghun	1	0	0	1
	Shinkor	1	0	0	1
	Shinkor	1	0	0	1
Bardak	Alay	1	0	0	1
	Yulghun	1	0	0	1
	Shinkor	1	0	0	1
	Shinkor	1	0	0	1
Bardak	Alay	1	0	0	1
	Yulghun	1	0	0	1
	Shinkor	1	0	0	1
	Shinkor	1	0	0	1
Bardak	Alay	1	0	0	1
	Yulghun	1	0	0	1
	Shinkor	1	0	0	1
	Shinkor	1	0	0	1
Bardak	Alay	1	0	0	1
	Yulghun	1	0	0	1
	Shinkor	1	0	0	1
	Shinkor	1	0	0	1
Bardak	Alay	1	0	0	1
	Yulghun	1	0	0	1
	Shinkor	1	0	0	1
	Shinkor	1	0	0	1
Bardak	Alay	1	0	0	1
	Yulghun	1	0	0	1
	Shinkor	1	0	0	1
	Shinkor	1	0	0	1
Bardak	Alay	1	0	0	1
	Yulghun	1	0	0	1
	Shinkor	1	0	0	1
	Shinkor	1	0	0	1
Bardak	Alay	1	0	0	1
	Yulghun	1	0	0	1
	Shinkor	1	0	0	1
	Shinkor	1	0	0	1
Bardak	Alay	1	0	0	1
	Yulghun	1	0	0	1
	Shinkor	1	0	0	1
	Shinkor	1	0	0	1
Bardak	Alay	1	0	0	1
	Yulghun	1	0	0	1
	Shinkor	1	0	0	1
	Shinkor	1	0	0	1
Bardak	Alay	1	0	0	1
	Yulghun	1	0	0	1
	Shinkor	1	0	0	1
	Shinkor	1	0	0	1
Bardak	Alay	1	0	0	1
	Yulghun	1	0	0	1
	Shinkor	1	0	0	1
	Shinkor	1	0	0	1
Bardak	Alay	1	0	0	1
	Yulghun	1	0	0	1
	Shinkor	1	0	0	1
	Shinkor	1	0	0	1
Bardak	Alay	1	0	0	1
	Yulghun	1	0	0	1
	Shinkor	1	0	0	1
	Shinkor	1	0	0	1
Bardak	Alay	1	0	0	1
	Yulghun	1	0	0	1
	Shinkor	1	0	0	1
	Shinkor	1	0	0	1
Bardak	Alay	1	0	0	1
	Yulghun	1	0	0	1
	Shinkor	1	0	0	1
	Shinkor	1	0	0	1
Bardak	Alay	1	0	0	1
	Yulghun	1	0	0	1
	Shinkor	1	0	0	1
	Shinkor	1	0	0	1
Bardak	Alay	1	0	0	1
	Yulghun	1	0	0	1
	Shinkor	1	0	0	1
	Shinkor	1	0	0	1
Bardak	Alay	1	0	0	1
	Yulghun	1	0	0	1
	Shinkor	1	0	0	1
	Shinkor	1	0	0	1
Bardak	Alay	1	0	0	1
	Yulghun	1	0	0	1
	Shinkor	1	0	0	1
	Shinkor	1	0	0	1
Bardak	Alay	1	0	0	1
	Yulghun	1	0	0	1
	Shinkor	1	0	0	1
	Shinkor	1	0	0	1
Bardak	Alay	1	0	0	1
	Yulghun	1	0	0	1
	Shinkor	1	0	0	1
	Shinkor	1	0	0	1
Bardak	Alay	1	0	0	1
	Yulghun	1	0	0	1
	Shinkor	1	0	0	1
	Shinkor	1	0	0	1
Bardak	Alay	1	0	0	1
	Yulghun	1	0	0	1
	Shinkor	1	0	0	1
	Shinkor	1	0	0	1
Bardak	Alay	1	0	0	1
	Yulghun	1	0	0	1
	Shinkor	1	0	0	1
	Shinkor	1	0	0	1
Bardak	Alay	1	0	0	1
	Yulghun	1	0	0	1
	Shinkor	1	0	0	1
	Shinkor	1	0	0	1
Bardak	Alay	1	0	0	1
	Yulghun	1	0	0	1
	Shinkor	1	0	0	1
	Shinkor	1	0	0	1
Bardak	Alay	1	0	0	1
	Yulghun	1	0	0	1
	Shinkor	1	0	0	1
	Shinkor	1	0	0	1
Bardak	Alay	1	0	0	1
	Yulghun	1	0	0	1
	Shinkor	1	0	0	1
	Shinkor	1	0	0	1
Bardak	Alay	1	0	0	1
	Yulghun	1	0	0	1
	Shinkor	1	0	0	1
	Shinkor	1	0	0	1
Bardak	Alay	1	0	0	1
	Yulghun	1	0	0	1
	Shinkor	1	0	0	1
	Shinkor	1	0	0	1
Bardak	Alay	1	0	0	1
	Yulghun	1	0	0	1
	Shinkor	1	0	0	1
	Shinkor	1	0	0	1
Bardak	Alay	1	0	0	1
	Yulghun	1	0	0	1
	Shinkor	1	0	0	1
	Shinkor	1	0	0	1
Bardak	Alay	1	0	0	1
	Yulghun	1	0	0	1
	Shinkor	1	0	0	1
	Shinkor	1	0	0	1
Bardak	Alay	1	0	0	1
	Yulghun	1	0	0	1
	Shinkor	1	0	0	1
	Shinkor	1	0	0	1
Bardak	Alay	1	0	0	1
	Yulghun	1	0	0	1
	Shinkor	1	0	0	1
	Shinkor	1	0	0	1
Bardak	Alay	1	0	0	1
	Yulghun	1	0	0	1
	Shinkor	1	0	0	1
	Shinkor	1	0	0	1
Bardak	Alay	1	0	0	1
	Yulghun	1	0	0	1
	Shinkor	1	0	0	1
	Shinkor	1	0	0	1
Bardak	Alay	1	0	0	1
	Yulghun	1	0	0	1
	Shinkor	1	0	0	1
	Shinkor	1	0	0	1
Bardak	Alay	1	0	0	1
	Yulghun	1	0	0	1
	Shinkor	1	0	0	1
	Shinkor	1	0	0	1
Bardak	Alay	1	0	0	1
	Yulghun	1	0	0	1
	Shinkor	1	0	0	1
	Shinkor	1	0	0	1
Bardak	Alay	1	0	0	1
	Yulghun	1	0	0	1
	Shinkor	1	0	0	1
	Shinkor	1	0	0	1
Bardak	Alay	1	0	0	1
	Yulghun	1	0	0	1
	Shinkor	1	0	0	1
	Shinkor	1	0	0	1
Bardak	Alay	1	0	0	1
	Yulghun	1	0	0	1
	Shinkor	1	0	0	1
	Shinkor	1	0	0	1
Bardak	Alay	1	0	0	1
	Yulghun	1	0	0	1
	Shinkor	1	0	0	1
	Shinkor	1	0	0	1
Bardak	Alay	1	0	0	1
	Yulghun	1	0	0	1
	Shinkor	1	0	0	1
	Shinkor	1	0	0	1
Bardak	Alay	1	0	0	1
	Yulghun	1	0	0	1
	Shinkor	1	0	0	1
	Shinkor	1	0	0	1
Bardak	Alay	1	0	0	1
	Yulghun	1	0	0	1
	Shinkor	1	0	0	1
	Shinkor	1	0	0	1
Bardak	Alay	1	0	0	1
	Yulghun	1	0	0	1
	Shinkor	1	0	0	1
	Shinkor	1	0	0	1
Bardak	Alay	1	0	0	1
	Yulghun	1	0	0	1

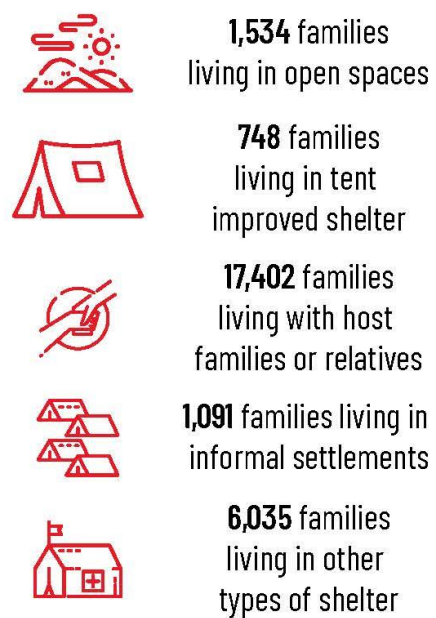
AFFECTED POPULATION



SHELTER



Affected Families



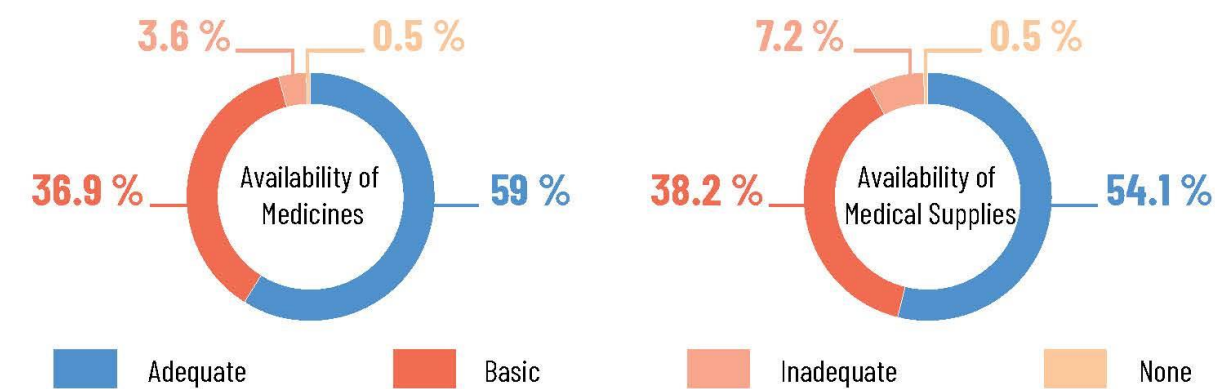
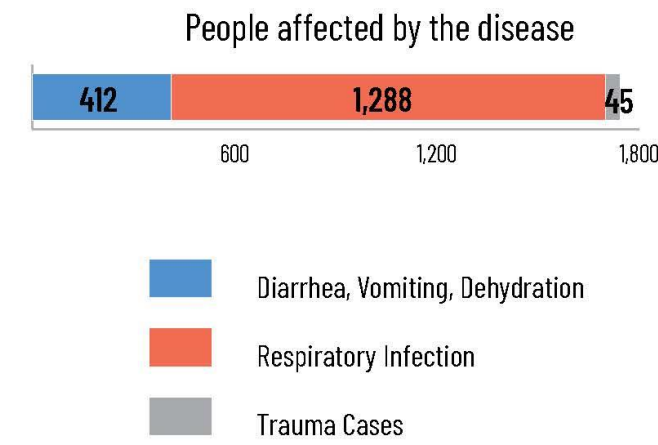
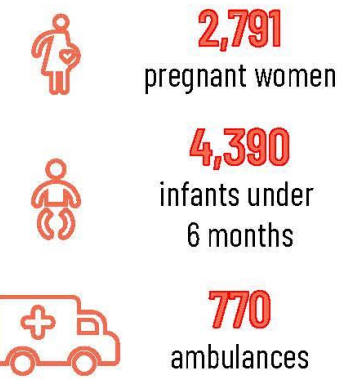
Lost/damaged/destroyed NFIs



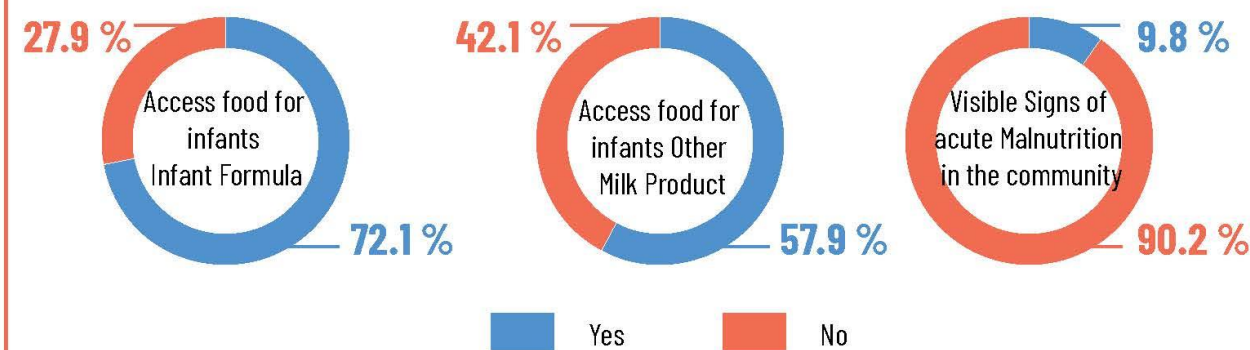
PROTECTION



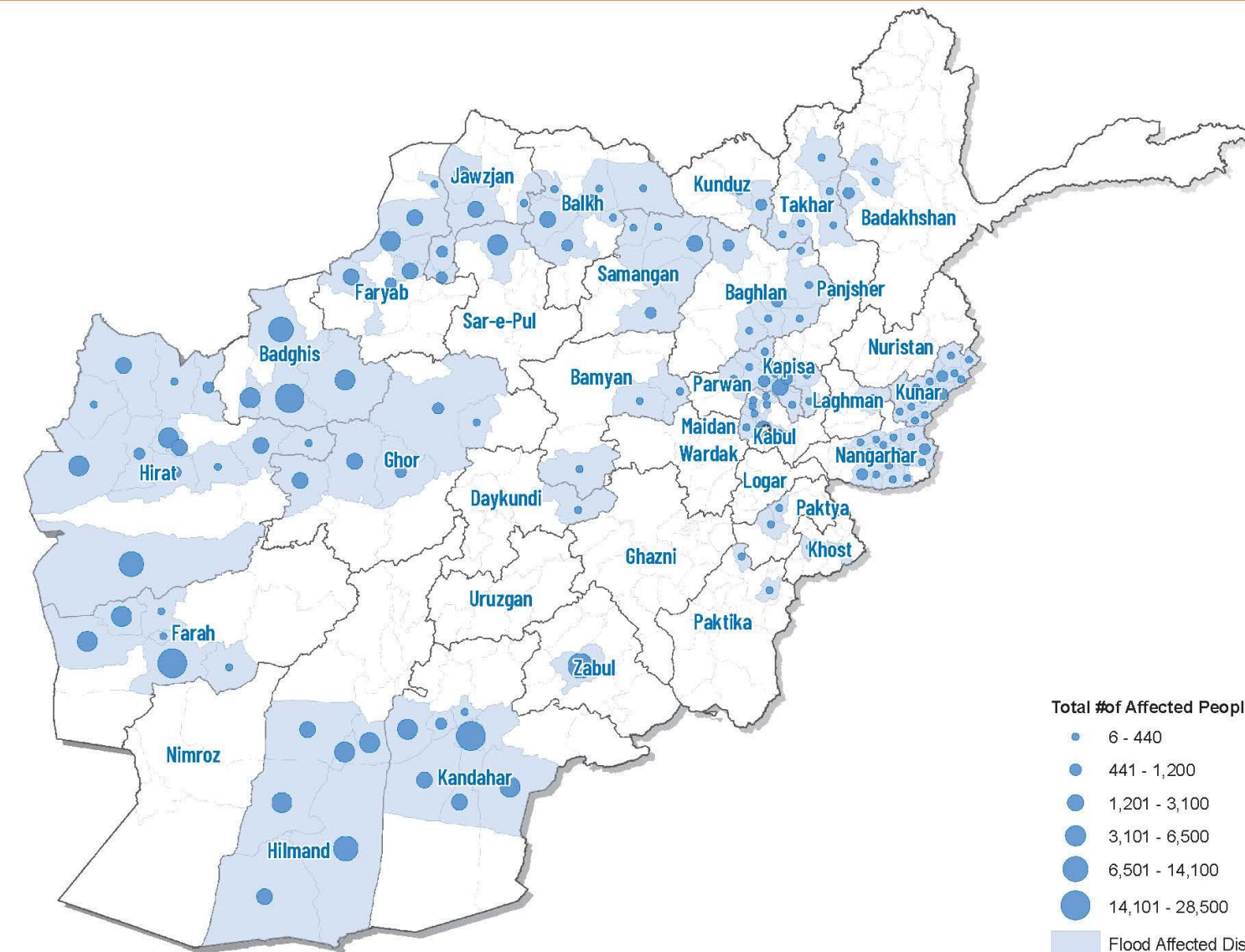
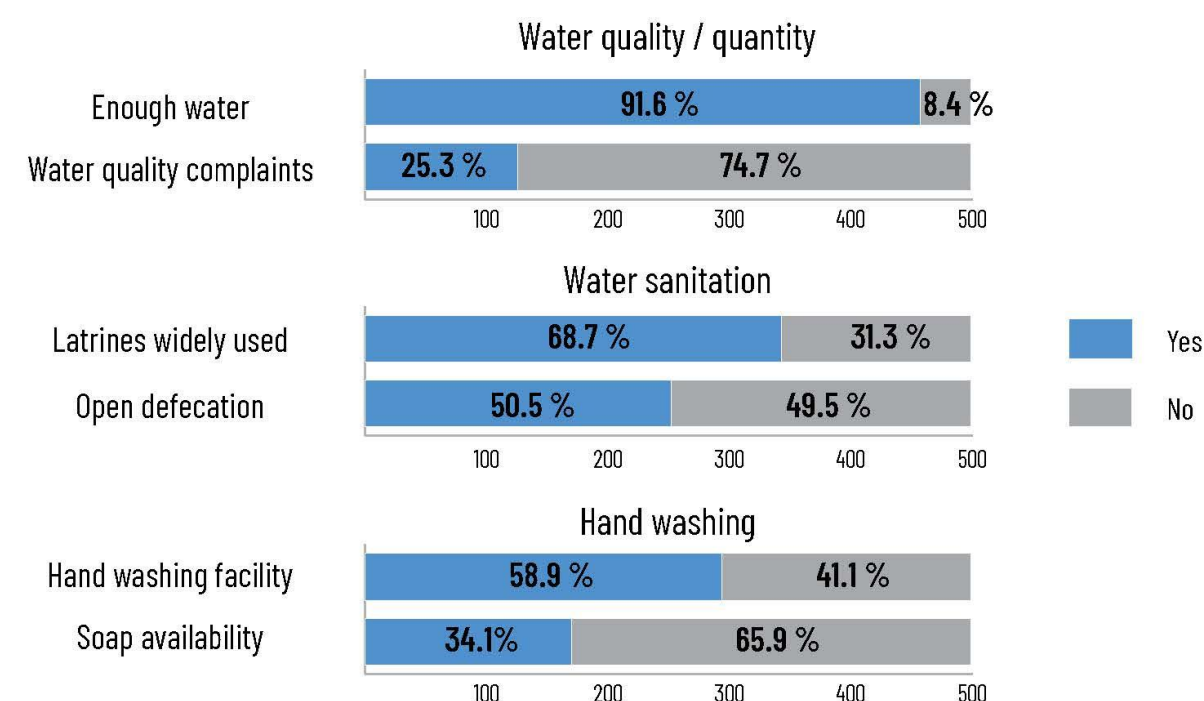
HEALTH



NUTRITION

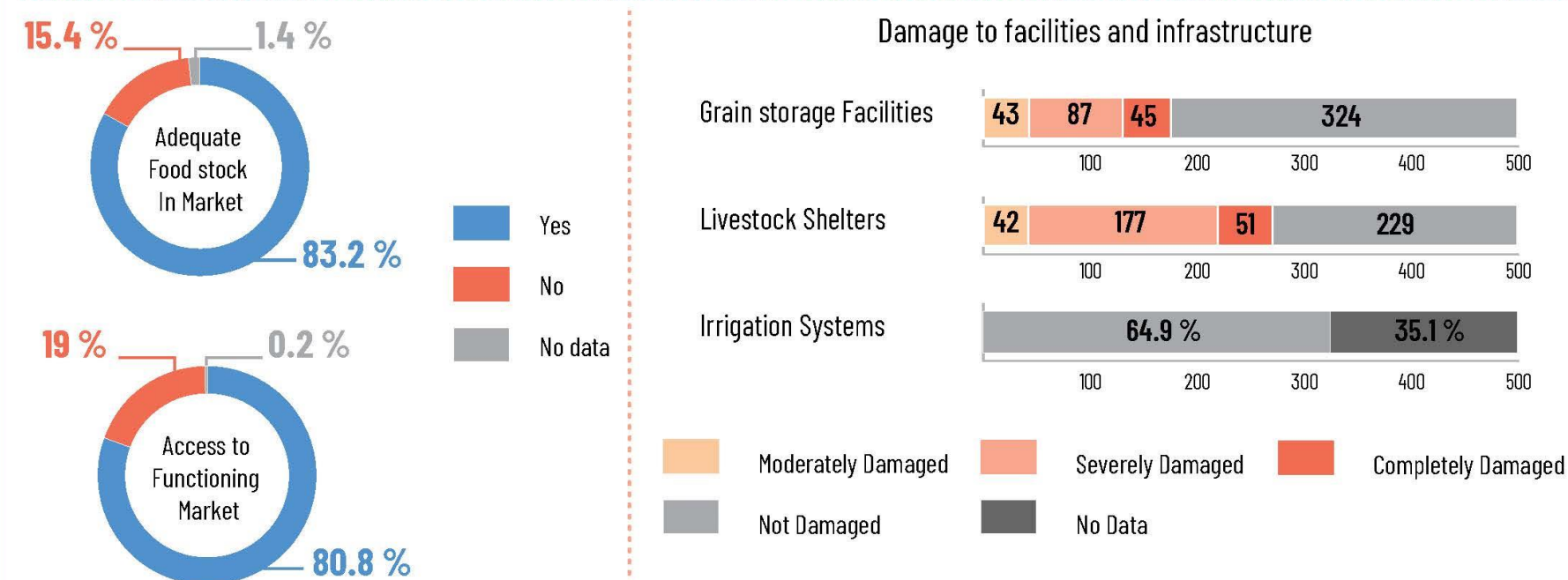


WASH



This dashboard is made possible by the generous support of the American people through the United States Agency for International Development (USAID) - Office of U.S. Foreign Disaster Assistance (OFDA). The boundaries, denominations, and designations displayed in this product are defined by the data shared with iMMAP. At iMMAP we visualize data, we do not create it, so these elements and freshness of the data are the responsibility of the data providers and no endorsement nor acceptance of it by iMMAP or USAID/OFDA can be assumed. Population affected by natural hazards calculated according to Rapid Assessment Form (RAF).

FOOD, LIVESTOCK, AND AGRICULTURE



ACCESS



Taken home message

Donor

Evidence-based assessment

- Consolidate data on Natural hazard
- Verify quality of training
- Sector analysis

Organizations

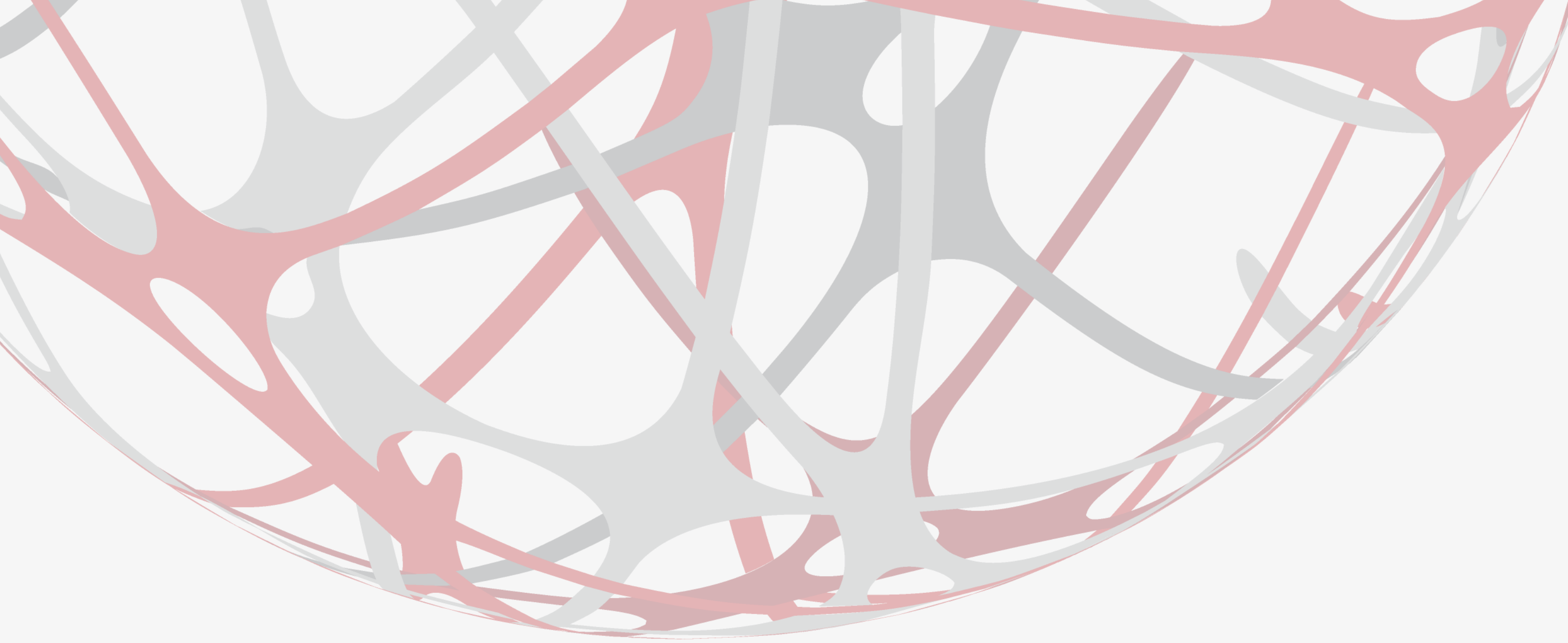
- Target training
- Identify white areas for support
- Identify underfunded sector



IM approach

- Visual understanding
- Sectorial prioritization
- Standardized dataset

Line Ministries has not been engages/support to create and maintain a comprehensive time series of natural hazards



Contact

Email: aporro@immap.org

Linkedin: andreaporro79

Twitter: AndreaPorro79